

TOSHIBA



e-ScanFlow Data Sheet

- Lean and powerful network scanning solution with OCR function and user management for e-BRIDGE Next multifunctional systems
- Modular extensions for control and connection of industry solutions and additional functions
- Centralised management via administration and configuration interface



TOGETHER
INFORMATION

Easy Implementation of Customer Requirements

Toshiba e-BRIDGE Next multifunction systems are the starting point for optimising and simplifying processes. The ease of use of the systems is a key factor for users. We are open to your additional requirements and the control of your industry software. With e-ScanFlow we can implement and develop a connection to almost all interfaces.

With the powerful yet streamlined e-ScanFlow solution, we combine Toshiba e-BRIDGE Next multifunction systems with intelligent solutions that efficiently simplify your workflows.

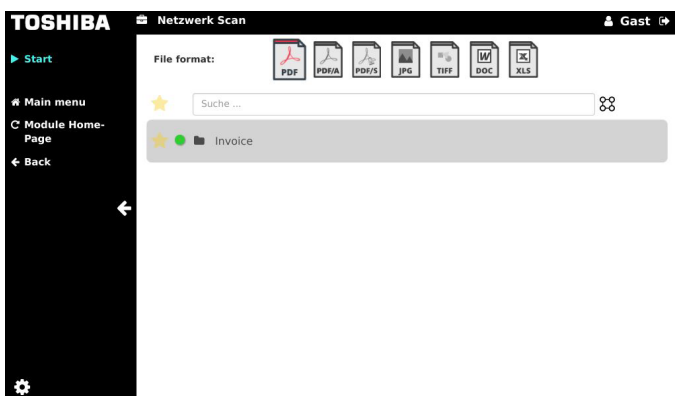
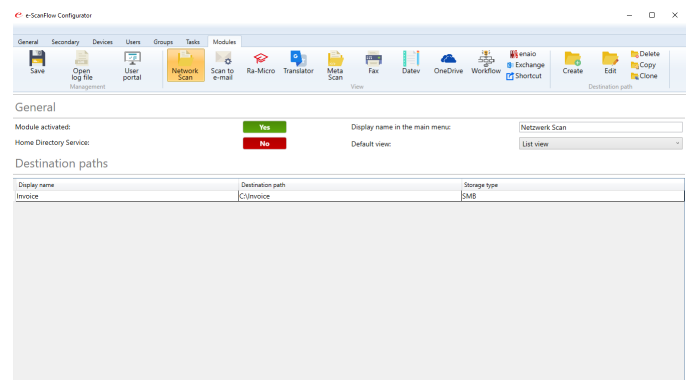
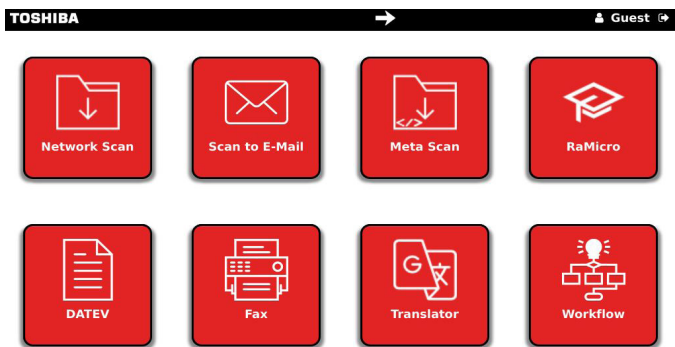
Customised and flexible solutions

e-ScanFlow is a flexible solution for document digitisation and is constantly evolving in response to dynamic market and customer demands.

With e-ScanFlow and optional modules for the extension of functions as well as the control of industry software, we can already implement many customer requirements such as DATEV® module and RA Micro® connector.

Simple administration

e-ScanFlow can be set up and administered easily and quickly via a configurator. No matter if it is about the standard modules “network scan”, as well as “scan to e-mail”, or the activation and setup of further optional modules.



Standard Function and Modules

e-ScanFlow is a powerful yet streamlined solution for digitising documents on Toshiba e-BRIDGE Next multifunctional systems. With standard network scanning, scan to email functionality, and integrated user management, the software already offers a wide range of options to easily and quickly optimise scanning workflows in companies and organisations. e-ScanFlow includes OCR functionality to create searchable PDFs.

The standard functionality can be extended by modules depending on customer requirements. For example, transferring digitised documents to your industry solution or add new functionality to the Toshiba e-BRIDGE Next MFP.

Shortcut module

Direct storage of URLs in the e-ScanFlow main menu for fast navigation to e.g. the daily meal plan or navigation to a MetaScan group.

Fax module

Faxes can be sent to any fax address. The scanned documents are spooled via the fax driver and sent to a printer that must have a fax module. The address of the printer with the fax module must be stored in the configurator.

Meta-Scan module

This module collects, in addition to the scanning process, meta information that is entered by the user before starting the scanning process (e.g. customer number or supplier). This additional data is processed according to a defined workflow.

Translation module

Documents are digitised via the Toshiba MFP, translated into almost any source language and output as a copy.

Workflow module

Module for direct connection between e-ScanFlow and e-FileWatcher. After a document has been digitised by e-ScanFlow, a data stream is transferred to e-FileWatcher for the execution of a defined workflow.

OneDrive for Business

Seamless connection of the e-BRIDGE MFP to the OneDrive storage space in the Office 365 service. In this way, digitised documents can be stored on OneDrive at any time.

Secondary installation

With this module, any number of secondary installations can be set up, providing additional flexibility in the use of e-ScanFlow. Each secondary installation is a stand-alone e-ScanFlow instance installed on a server.

Exchange connector

Direct connection to Microsoft Exchange allows viewing private Outlook contacts, as well as sending emails by the user himself, which are stored in the "sent items". The number of multifunctional systems integrated in e-ScanFlow is defined by the entry of the corresponding serial numbers.

System Requirements

Installation requirements

- .NET Framework 4.8 e-BRIDGE Plus for Dropbox™

Minimum requirements

- CPU: Quad Core 2.0 GHz¹⁾
- Memory: 8 GB RAM
- Hard disk space: 40 GB²⁾

Recommended requirements

- CPU: Quad Core 3.2 GHz
- Memory: 16 GB RAM
- Hard disk space: 80 GB

Supported operating systems

- Windows Server 2016 (64 bit)
- Windows Server 2019 (64 bit)
- Windows 10 (64 bit) ³⁾
- Windows 11 (64 bit) ³⁾

The number of multifunctional systems included in e-ScanFlow is defined by the entry of the corresponding serial numbers.

1) Depending on the usage of the modules, the required CPU power may vary.

2) Depending on the amount of stored documents, the required hard disk space varies.

3) Not recommended due to severe limitations (maximum 20 simultaneous TCP Connections). In addition, the corresponding "Home" editions are not supported as operating systems for server computers.

About Toshiba Tec

Toshiba Tec Germany Imaging Systems GmbH is part of the globally operating Toshiba Tec Corporation, active in various high-tech industrial sectors.

Toshiba Tec Corporation is a leading provider of information technology, operating across multiple industries - ranging from retail, education and business services to hospitality and manufacturing. With headquarters in Japan and over 70 subsidiaries worldwide, Toshiba Tec Corporation helps organisations transform the way they create, record, share, manage and display information.

For more information please contact us:

Toshiba Tec Germany Imaging Systems GmbH

Carl-Schurz-Str. 7
41460 Neuss
Germany

Telephone

+49 2131-1245-0

Fax

+49 2131-1245-402

Website

www.toshibatec.eu



Together Information is Toshiba's vision for how people and organisations create, record, share, manage and display ideas and data.

It is based on our belief that the most successful organisations are those that communicate information in the most efficient way.

We make that possible through an integrated portfolio of industry-specific solutions, all of which reflect Toshiba's commitment to the future of the planet.

