

FURNITURE SAFETY

Configurations

Contents

e-STUDIO520P/525P	2
e-STUDIO430P/530P	7
e-STUDIO430S/530S	8

e-STUDIO520P/525P

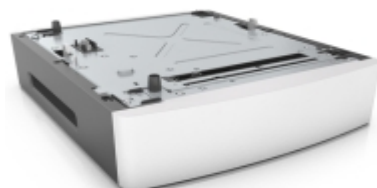
The printer with optional tray, finisher, and caster base (6B000000680)



The printer with optional tray, finisher, and swivel cabinet (6B000000687)



Spacer (6B000000673)



Output Options

Printer configuration	4-bin mailbox			High-capacity output expander ¹	Output expander ²			Staple finisher ³	Staple, hole punch finisher
	Top	Middle	Bottom		Top	Middle	Bottom		
A					✓	✓	✓		
		✓			✓		✓		
	✓	✓					✓		
	✓					✓	✓		
	✓		✓			✓			
		✓	✓			✓			
B	✓	✓	✓						
C					✓	✓			
			✓		✓				
	✓						✓		
D	✓	✓							
F	✓							✓	
G							✓	✓	
H				✓	✓				
I									✓
J								✓	
K					✓				
L				✓					
M	✓								

¹ The high-capacity output expander must always be at the bottom of a configuration.

² The output expander is the only option that can be placed on top of the high-capacity output expander.

³ The staple finisher must always be on top of a configuration.

Input Options

Notes:

- A maximum of four optional drawers may be configured with the printer.
- Always use a caster base when configuring the printer with an optional 2100-sheet tray.

Printer configuration	Optional 250-sheet tray ¹				Optional 550-sheet tray ¹				Spacer ²		Optional 2100-sheet tray ³
	1	2	3	4	1	2	3	4	1	2	
A											✓
					✓	✓	✓				✓
					✓	✓					✓
					✓						✓
	✓	✓	✓								✓
	✓	✓									✓
	✓										✓
	✓				✓						✓
	✓				✓	✓					✓
	✓	✓			✓						✓
B					✓	✓	✓	✓			
					✓	✓	✓				
					✓	✓					
					✓						
	✓				✓	✓	✓				
	✓	✓			✓	✓					
	✓	✓	✓		✓						
C	✓	✓	✓	✓							
	✓	✓	✓								
	✓	✓									
	✓										
	✓				✓	✓					
	✓				✓						
	✓				✓						
	✓	✓			✓						

¹ The optional 250- and 550-sheet trays may be installed in any order.
² The spacer must be under the optional 250- or 550-sheet tray and cannot be used with the 2100-sheet tray.
³ The optional 2100-sheet tray must always be at the bottom of a configuration.

Printer configuration	Optional 250-sheet tray ¹				Optional 550-sheet tray ¹				Spacer ²		Optional 2100-sheet tray ³	
	1	2	3	4	1	2	3	4	1	2		
D										✓		
					✓	✓	✓			✓		
					✓	✓				✓		
					✓					✓		
	✓	✓	✓							✓		
	✓	✓								✓		
	✓									✓		
	✓				✓	✓				✓		
	✓				✓					✓		
	✓	✓			✓					✓		
	✓				✓					✓	✓	
					✓	✓				✓	✓	

¹ The optional 250- and 550-sheet trays may be installed in any order.
² The spacer must be under the optional 250- or 550-sheet tray and cannot be used with the 2100-sheet tray.
³ The optional 2100-sheet tray must always be at the bottom of a configuration.

Furniture

Notes:

- A maximum of four optional drawers may be configured with the printer.
- Always use a caster base when configuring the printer with an optional 2,100-sheet feeder.

Placement	Optional 250-sheet tray ¹				Optional 550-sheet tray ¹				Optional 2100-sheet tray ²	Spacer ³	4-bin mailbox
	1	2	3	4	1	2	3	4			
Floor ^{4,5}					✓						✓
	✓	✓									✓
	✓										✓
Desktop ^{6,7}					✓	✓	✓	✓			✓
	✓	✓	✓	✓							✓
										✓	✓
Caster base ⁸									✓		✓
					✓	✓	✓				✓
	✓	✓	✓								✓
	✓				✓					✓	✓

¹ The optional 250- and 550-sheet trays may be installed in any order.
² The optional 2100-sheet tray must always be at the bottom of a configuration.
³ The spacer must be under the optional 250- or 550-sheet tray and cannot be used with the 2100-sheet tray.
⁴ An optional caster base may be used, but you can still safely operate the printer without it.
⁵ This may be configured with any output options.
⁶ An optional caster base must not be used when using the printer with desktop.
⁷ This may be configured with B and C input options and any output options.
⁸ This may be configured with any input and output options.

e-STUDIO430P/530P

Printer Model	Placement	Optional 2000 sheet tray	Optional 250-sheet trays				Optional 550-sheet trays or 5.1-inch spacers				Optional Caster Base 6B000000543
			1	2	3	4	1	2	3	4	
e-STUDIO430P and e-STUDIO530P	Desktop or swivel cabinet		✓	✓	✓	✓					
			✓	✓	✓		✓				
			✓	✓			✓	✓			
			✓				✓	✓	✓	✓	
e-STUDIO430P	Floor		✓	✓	✓						
e-STUDIO530P			✓				✓				
			✓	✓	✓			✓	✓		
e-STUDIO430P and e-STUDIO530P			✓	✓	✓			✓	✓	✓	
			✓					✓	✓	✓	✓
			✓	✓	✓	✓					
			✓	✓	✓			✓			
			✓	✓				✓	✓		
	✓					✓	✓	✓			

Note: Make sure the total height of the selected configuration suits for your office environment.

e-STUDIO430S/530S

Printer Model	Placement	Optional 2000 sheet tray	Optional 250-sheet trays				Optional 550-sheet trays or 5.1-inch spacers			Optional Caster Base 6B000000543
			1	2	3	4	1	2	3	
e-STUDIO430S	Desktop or swivel cabinet		✓	✓	✓	✓				
			✓	✓	✓		✓			
			✓				✓	✓		
							✓	✓	✓	
e-STUDIO530S		✓	✓	✓		✓ ¹				
		✓				✓ ¹	✓			
						✓ ¹	✓	✓		
e-STUDIO430S		Floor		✓	✓	✓	✓			
	✓			✓	✓		✓			
	✓			✓			✓	✓		
							✓	✓	✓	
	✓		✓							
✓					✓					
e-STUDIO530S	✓		✓	✓		✓ ¹				
	✓		✓			✓ ¹	✓			
						✓ ¹	✓	✓		
	✓				✓ ¹					

¹ One 550-sheet tray included with e-STUDIO530S

Notes:

- The spacer must be under the 250- and 500- sheet trays and cannot be used with the 2,000- sheet tray.
- The optional 2,000- sheet tray must be installed under any of the other trays.
- At least one input tray or spacer is required with this caster base.