



TOSHIBA

Solution for Logistics & Manufacturing

- Hybrid MFP for Logistics
- Form & Label Printing
- Easy Filing with Zone OCR
- Easily Making GHS Labels
- Small Footprint



TOGETHER
INFORMATION

Hybrid MFP for Logistics

Highlight Feature

- > Temporary documents (e.g. picking lists, inventory lists) are printed in erasable blue, to reuse paper.
- > Documents, such as invoices that are provided outside the company, are printed in black and white.
- > The Hybrid MFP can print in both black-and-white and erasable blue.
- > The optional paper reusing device helps data to be archived before the toner is erased.



Your Challenges

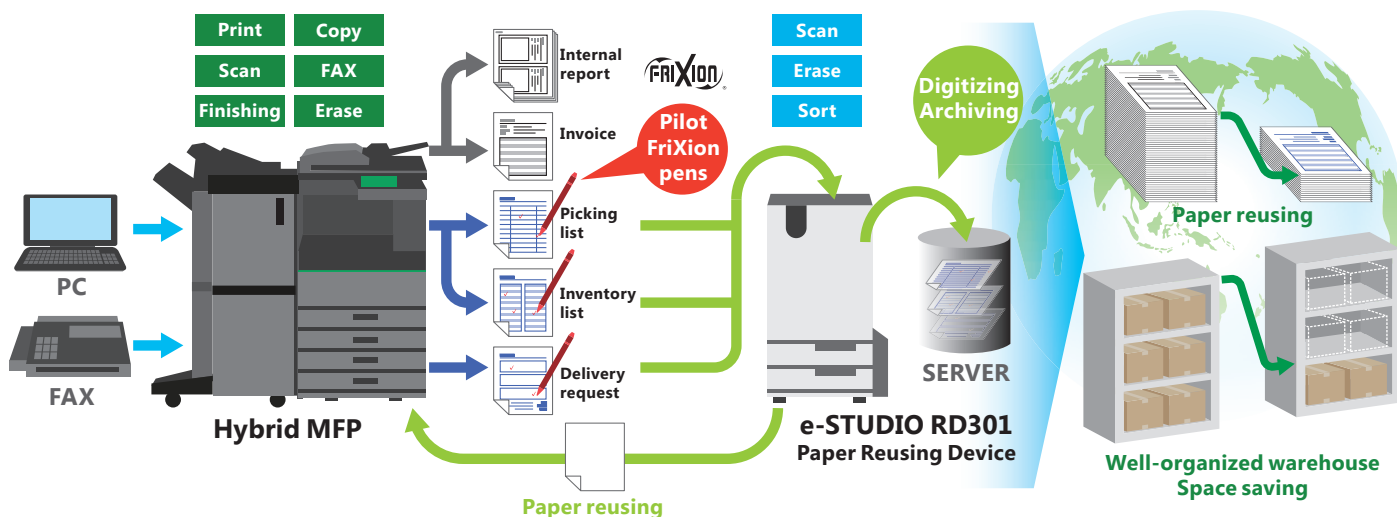
Most internal documents used for daily warehouse operation are discarded after arrangements. As a result, cost of paper and disposal are increased, and larger storage space is needed. It would be helpful if a MFP can print reusable documents for internal use, while producing formal documents for external use.

Our Solution

The Toshiba Hybrid MFP that enables printing with its unique erasable blue toner can erase the toner to reuse the paper. Even Pilot FriXion pens' ink can be erased as well. Data can be digitized during toner erase operation by e-STUDIO RD301 so that you can find them easily later. In addition, this MFP performs regular monochrome printing for external documents. Paper cost and spaces can be reduced.

Your benefits

- Reduce paper costs and disposal costs
- Save spaces
- Contribute to the global environment.



For more information and a complete list of MFPs with these functions, please contact us:

Toshiba Tec Germany Imaging Systems GmbH

Carl-Schurz-Str. 7
41460 Neuss
Germany

Telephone

+49 2131-1245-0

Website

www.toshibatec.eu

Form & Label Printing

Highlight Feature

- > All shipping related documents are produced by one machine
- > Form and label papers are on one double-sided paper with seal and perforation
- > Saving time of managing different documents and machines
- > Organizing documents on one sheet of paper makes work more efficient
- > Showing color printing advertisements is possible



Your Challenges

Labeling process for shipping items involves various forms, such as invoices, return labels and delivery slips, so more than one printing machines are required. Hence, it also takes time to manage those machines.

If there is a way to enhance the entire workflow, that would be helpful...

Our Solution

The Toshiba e-STUDIO5015AC/5005AC Series is able to print various shipping related forms on one double-sided form & label paper with seal and perforation. The overall picking process can be done efficiently and correctly.

In addition, since the entire process is done by one machine, time of managing machines in your daily work is saved.

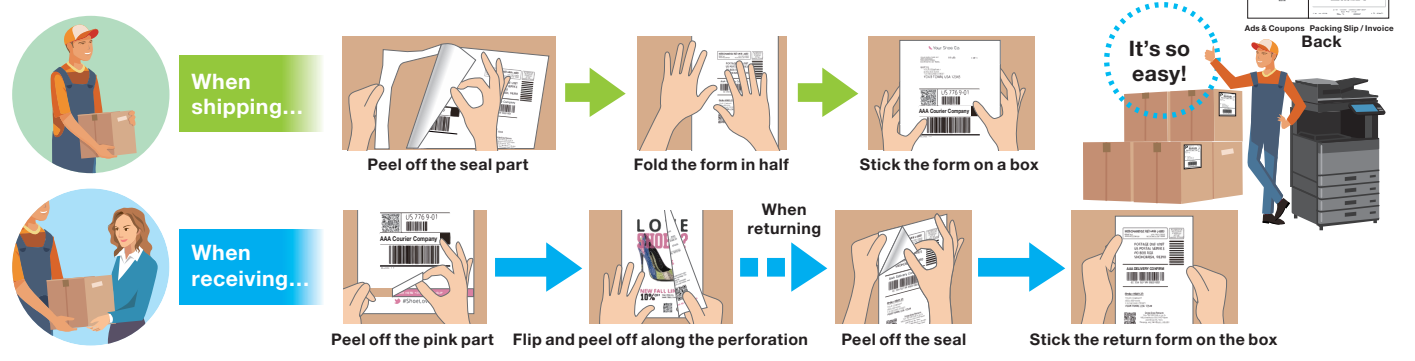
* e-STUDIO5015AC Series: e-STUDIO2515AC/3015AC/3515AC/4515AC/5015AC
 * e-STUDIO5005AC Series: e-STUDIO2505AC/3005AC/3505AC/4505AC/5005AC

Your benefits

- Print various shipping related forms on a special form & label papers
- The whole printing process is done by one MFP
- No need to prepare plastic bags for shipping forms
- Print forms in all-in-one style with color advertisements
- Picking errors are reduced by one label and process
- Save time of organizing documents and machines
- Get more satisfaction from your customers

Consequently, your working efficiency will be enhanced!

Creating shipping forms with Toshiba e-STUDIO5015AC/5005AC Series



For more information and a complete list of MFPs with these functions, please contact us:

Toshiba Tec Germany Imaging Systems GmbH

Carl-Schurz-Str. 7
 41460 Neuss
 Germany

Telephone
 +49 2131-1245-0

Website
www.toshibatec.eu

Easy Filing with Zone OCR

Highlight Feature

- > Saving OCR result automatically by setting it as folder name or file name
- > Using templates to improve work efficiency
- > Setting OCR zones with highlighter based on formats of documents
- > Processing OCR to barcodes besides texts and numbers
- > OCR is available up to 3 zones



Your Challenges

"We save a large volume of order forms and invoices as digitized documents by scanning after receiving them everyday. The formats of documents vary according to customers. Also, it is troublesome to open those data, rename them and categorize them after scanning. It takes time to rename and find a particular file later, so I am kind of suffering now..."

Our Solution

The Toshiba e-BRIDGE Next MFP can process OCR up to 3 zones of texts, numbers and barcodes, and those information can be automatically sorted and utilized as folder name or file name. This function allows you to eliminate renaming process and easily find particular files later. You have two ways to set OCR zones according to the type and volume of documents—selecting templates (up to 15 templates) or indicating zones by a highlighter.

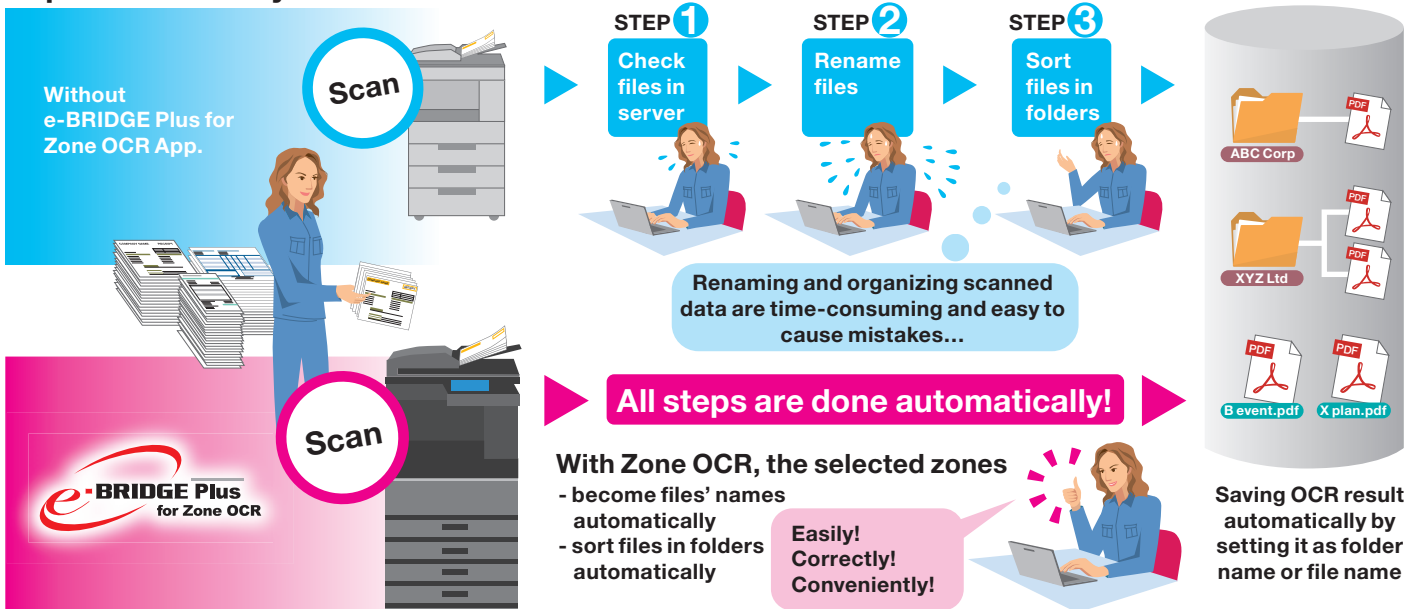
Your benefits

Since OCR result is automatically saved as folder name or file name...

- you do not need to rename files manually
- operating efficiency will be enhanced correctly and conveniently

* The e-BRIDGE Plus for Zone OCR and Embedded OCR Enabler are needed in order to use this function..

Improve efficiency with Zone OCR



For more information and a complete list of MFPs with these functions, please contact us:

Toshiba Tec Germany Imaging Systems GmbH

Carl-Schurz-Str. 7
41460 Neuss
Germany

Telephone
+49 2131-1245-0

Website
www.toshibatec.eu

Easily making GHS labels

Highlight Feature

- > Printing GHS* labels with color combination internally
- > BS5609 (Section Three) Certificated
- > No need to order preprinted labels in advance
- > No need to manage various preprinted labels
- ★ Globally Harmonized System of Classification and Labelling of Chemicals



Easily making GHS labels

Your Challenges

"We need to order various preprinted GHS labels that logos or caution signs were already printed in color, which is time consuming. Also, managing those inventories also needs time, money and spaces. It would be helpful if we could reduce the operation cost and time of making GHS labels while keeping the durability..."

Our Solution

Working with TESLIN*¹ labels, the Toshiba e-STUDIO3515AC/3005AC/2515AC can create durable GHS labels from scratch while keeping reliability of BS 5609 (Section Three)*². Since all designs including GHS pictogram*³ can be printed on blank labels, you do not need to order preprinted labels in advance, and managing inventory becomes easier.

Your benefits

Save time and cost on ordering preprinted labels and managing inventories

Easy to create designs of GHS labels with durability based on your needs by using BarTender*⁴ together

*1 TESLIN – a type of waterproof paper manufactured by PPG Industries, Inc.

*2 BS 5609 (Section Three) – a particular label applying to containers of chemicals for marine transportation use. When a particular material is tested with a specific printer, Section Three compliance will be granted. (The certified combination: TESLIN labels (SP700PR+TSP-1) and Toshiba MFPs)

*3 GHS pictogram – symbols with red diamond borders that shows hazard information

*4 BarTender – BarTender software transforms your business information into the labels, barcodes, and more.

Making GHS labels internally



- Need to order various preprinted labels in advance
- Hard to find labels
- Need many spaces to organize

No more labels...

Should I order new preprinted labels now? But I need to make this one immediately!



Besides preprinted parts, only monochrome printing is available...



- Only need to prepare blank labels
- Easy to find and organize
- Only occupy small spaces

No worries about lacking labels!

I can make label templates immediately!



You can design and print GHS labels with GHS Pictogram according to your needs now!

For more information and a complete list of MFPs with these functions, please contact us:

Toshiba Tec Germany Imaging Systems GmbH

Carl-Schurz-Str. 7
41460 Neuss
Germany

Telephone

+49 2131-1245-0

Website

www.toshibatec.eu

TOSHIBA

Small Footprint

Highlight Feature

- > Small footprint with A3 printing ability
- > High reliability & durability
- > Being able to print diverse media



TOGETHER
INFORMATION

Small Footprint

Your Challenges

Sometimes it is necessary to put MFPs at limited spaces or bring them to different places for temporary use, but most MFPs are very big and heavy. In addition to regular printing such as picking list or delivery slip, we want to print on...

- the all-in-one label which can integrate invoices, delivery notes, and return labels, and can save time.
- the special paper which is required durability or water resistance in order to use it as the shelf label, signage or the hazard map.

Our Solution

The Toshiba e-STUDIO2822AF/2822AM is designed compact, so you can place the machine at a small corner, or move it. With its sufficient functions, it can print many types of media including durable water-proof papers and double-sided form & label media with seal and perforations besides regular papers.

Your benefits

- Fit in a small corner to save spaces
 - Easily carry and move for temporary use
 - Continuously read papers by standard document feeder to enhance work efficiency
 - Print various media including durable water-proof papers and Form & Label media* for shipping
- * Please refer Form & Label Printing material for more details

Work smoothly with this compact but durable MFP

The illustration depicts several scenarios where the compact MFP is used:

- Warehouse A:** A worker prints a sign 'C' for a rack. Text: "Print new water-proof signs when racks' signs are deteriorated".
- Warehouse B:** A worker prints a document. Text: "We also need page 7".
- Warehouse C:** A worker prints a document. Text: "We can print it now!".
- Warehouse D:** A worker prints a document. Text: "Bring MFPs anywhere".
- Warehouse E:** A worker prints a document. Text: "Get necessary documents immediately".
- Warehouse F:** A worker prints a document. Text: "Print special Form & Label while packing items near belt conveyors".
- Warehouse G:** A worker prints a document. Text: "Pack items quickly and conveniently".
- Warehouse H:** A worker prints a document. Text: "Print new water-proof signs when racks' signs are deteriorated".
- Office:** A worker prints a document. Text: "Fit in corners of small offices".
- Office:** A worker prints a document. Text: "Print picking lists, checking lists and other shipping documents in your office".

Inset image showing printed documents:

Front	Back
Shipping Label	Returns Label
Ads & Coupons	Packing Slip / Invoice

Inset image showing a Picking list document.

For more information and a complete list of MFPs with these functions, please contact us:

Toshiba Tec Germany Imaging Systems GmbH

Carl-Schurz-Str. 7
41460 Neuss
Germany

Telephone

+49 2131-1245-0

Website

www.toshibatec.eu